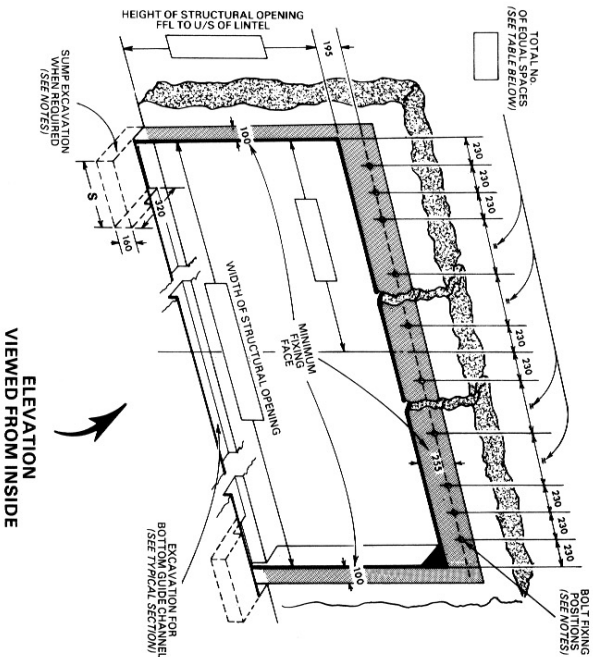
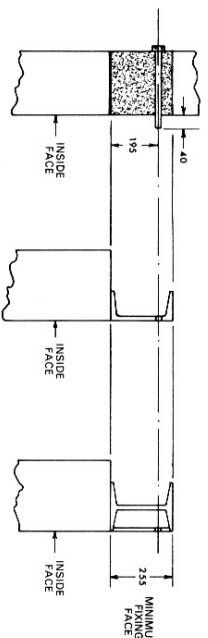
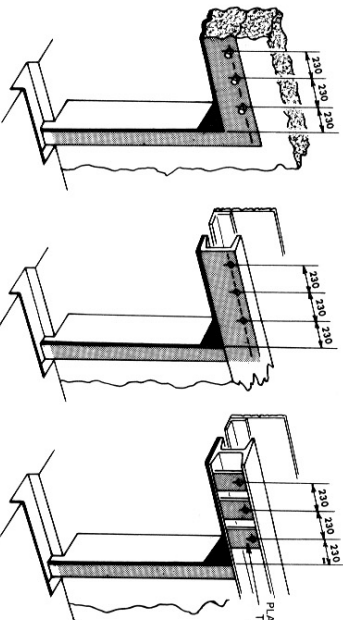


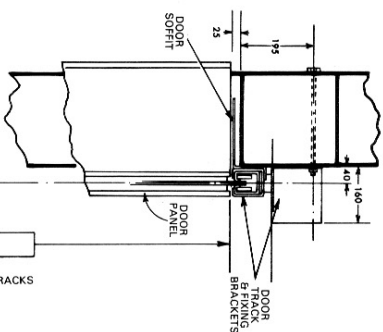
ALTERNATIVE CONSTRUCTIONS OF OPENINGS TO SUIT DOOR FIXING REQUIREMENTS



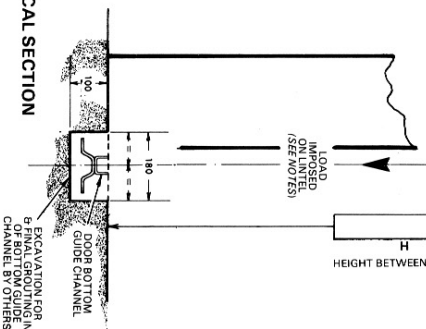
ELEVATION
VIEWED FROM INSIDE



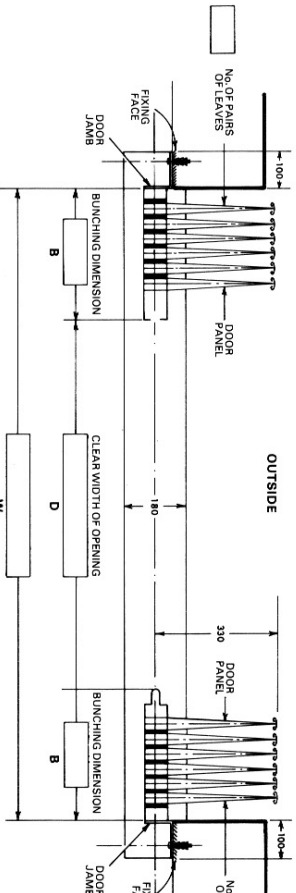
SECTIONS THROUGH LINTELS



TYPICAL SECTION



NOTE: ALL FIXING FACES MUST BE FLUSH IN THE SAME VERTICAL PLANE AND ARE INDICATED THUS



PLAN VIEW

HGBPART	TOTAL NUMBER OF EQUAL SPACES FOR BOLT FIXINGS RELATED TO DIMENSION W															
	2610	3790	4970	6150	7335	8515	9695	10875	12060	13240	14420	15600	16780	17960	19140	20320
2	4	6	8	10	12	14	16	18	20	22	24	26	28	30	32	34
4	8	12	16	20	24	28	32	36	40	44	48	52	56	60	64	68
6	12	18	24	30	36	42	48	54	60	66	72	78	84	90	96	102
8	16	24	32	40	48	56	64	72	80	88	96	104	112	120	128	136
10	20	30	40	50	60	70	80	90	100	110	120	130	140	150	160	170
12	24	36	48	60	72	84	96	108	120	132	144	156	168	180	192	204
14	28	42	56	70	84	98	112	126	140	154	168	182	196	210	224	238
16	32	48	64	80	96	112	128	144	160	176	192	208	224	240	256	272

INSTALLATION DRAWING FOR WID SLIDING SHUTTER (TYPE HG)

ARRANGEMENT 3 BI-PARTING MANUALLY OPERATED

DRAWING ISSUE No.

ARCHITECT CONTRACTOR

LOCATION

DRAWN BY
SCALE
DATE

FOR EMERGENCY REPAIR OR MAINTENANCE CALL:
www.wesssexindustrialdoors.com
enquiry@wesssexindustrialdoors.com
01935 473708 / 473851 Fax: 01935 479413
Adley Road, Luton Trading Estate, Yeovil, Somerset BA22 8RP

ORDER No. DRAWING No.
HG3 BPM

IMPORTANT NOTES:

- DIMENSIONS**
All dimensions shown in millimetres.
- DOOR**
Door panel, track, track fixing brackets, soffits, door jamb and bottom guide channel by WID.
- STRUCTURE**
All other materials and work indicated must be provided by others. ALL FIXING FACES MUST BE FLUSH AND IN THE SAME VERTICAL PLANE.
- BOLT FIXINGS**
The lintel must be suitably tied into structure to resist the over-turning moment and of adequate size to ensure the top track does not deflect more than 13 mm under a moving load of 36.7 kgs/m² of door area in the direction and position of the arrow shown in the typical section. When the door is fixed to a concrete lintel, 12 mm dia. cast-in-rag or through bolts must be provided. When fixed to steel section lintels, 14 mm dia. holes must be drilled. Should the lintel construction be such that fixings are inaccessible, bolts must be welded in to give a minimum thread projection of 40 mm from the fixing face.
- DOOR JAMB FIXINGS**
Cast in, through and welded-in bolts must be supplied and fixed in position by others. All other fixings by WID.
- SUMP EXCAVATION**
When other than steelwork is used, the area of the vertical fixing faces for the full height must be constructed of suitable materials for rawl bolt fixing of the door jamb. When sumps are ordered, extra excavation is required at both ends of the bottom guide channel excavation 320 mm wide x 165 mm deep. The length of the excavation 'S' is determined by the number of pairs of leaves provided, up to and including:-
8 pairs 'S' = 710 mm
9 to 13 pairs 'S' = 915 mm