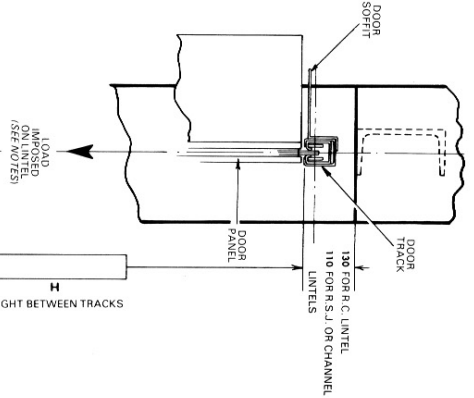
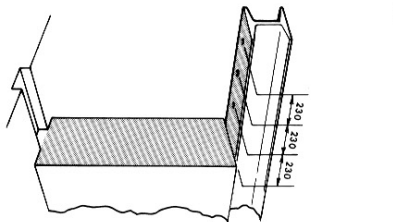
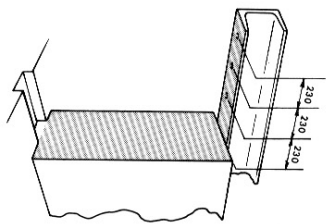
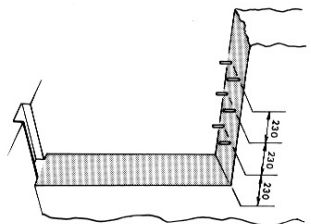
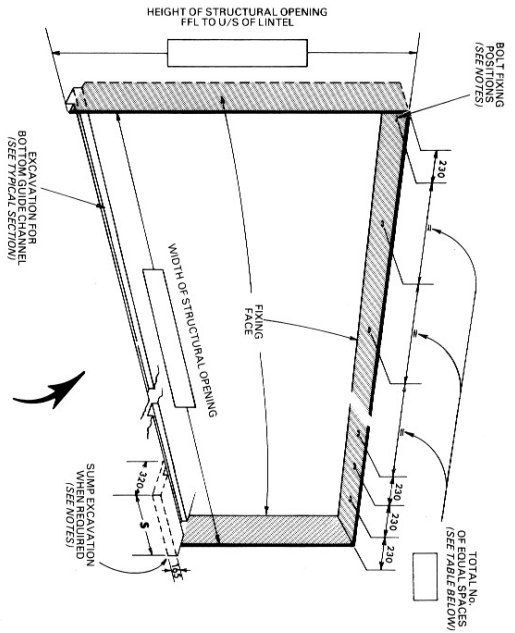
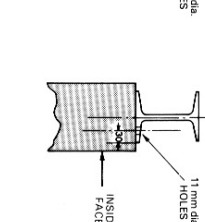
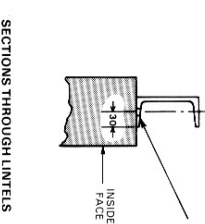
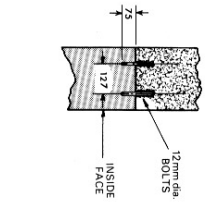


ALTERNATIVE CONSTRUCTIONS OF OPENINGS TO SUIT DOOR FIXING REQUIREMENTS

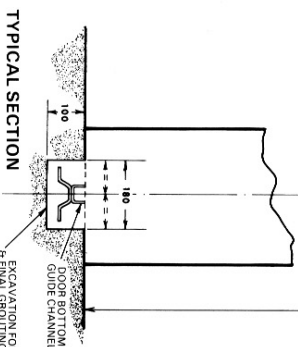


ELEVATION VIEWED FROM INSIDE

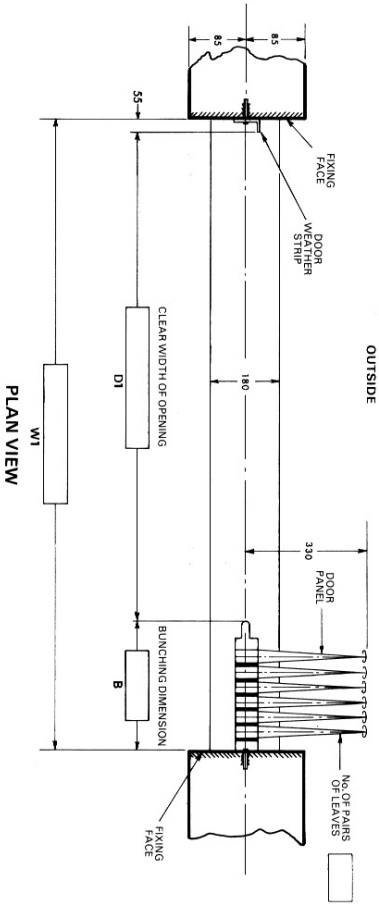
NOTE: ALL FIXING FACES MUST BE FLUSH AND ARE INDICATED THUS



SECTIONS THROUGH LINTELS



PLAN VIEW



HGSINGLE

TOTAL NUMBER OF EQUAL SPACES FOR BOLT FIXINGS RELATED TO DIMENSION W1

| 1350 | 1940 | 2530 | 3120 | 3710 | 4300 | 4890 | 5480 | 6075 | 6665 | 7255 | 7845 |
|------|------|------|------|------|------|------|------|------|------|------|------|
| 1 | 2 | 3 | 4 | 5 | 6 | 7 | 8 | 9 | 10 | 11 | 12 |

IMPORTANT NOTES:

- DIMENSIONS**
All dimensions shown in millimetres.
- DOOR**
Door panels, track, soffit, weatherstrip and bottom guide channel by WID.
- STRUCTURE**
All other materials and work indicated must be provided by others. ALL FIXING FACES MUST BE FLUSH.
- BOLT FIXINGS**
The lintel must be suitably tied into the structure to resist any over-turning moment and of adequate size to ensure the top track does not deflect more than 13 mm under a moving load of 36.7 Kgs/m² of door area in the direction and position of the arrow shown in the typical section. When the door is hung from a concrete lintel 12 mm dia. cast-in rag bolts must be provided with a bolt projection of 75 mm below soffit face of lintel, see section for R.C. lintel.
- DOOR PANEL & WEATHERSTRIP FIXINGS**
When steel section lintels are used 11 mm dia. holes must be drilled. Cast-in rag bolts to be supplied and fixed in position by others. All other fixings by WID.
- SUMP EXCAVATION**
When other than steelwork is used, the area of the vertical fixing faces for the full height must be constructed of suitable material for raw bolt fixing of the door and weatherstrip.
- DOOR TRACK & BOTTOM GUIDE CHANNEL**
When sumps are ordered extra excavation is required at the bunching end of the bottom guide channel excavation 320 mm wide x 165 mm deep. The length of the excavation 'S' is determined by the number of pairs of leaves provided, up to and including:
8 pairs 'S' = 610 mm
9 to 13 pairs 'S' = 815 mm

INSTALLATION DRAWING FOR WID SLIDING SHUTTER (TYPE HG) ARRANGEMENT 2 RIGHT HAND MANUALLY OPERATED

DRAWING ISSUE No.

ARCHITECT/CONTRACTOR

FOR EMERGENCY REPAIR OR MAINTENANCE CALL:
01353 473708 / 473881 Fax: 01353 473413
www.wid.co.uk

LOCATION

WILSONS INDUSTRIAL DOORS
Aulley Road, Luton Trading Estate, Yerril, Sommerset BA22 8PP

11/74

SCALE

DATE

DRAWING No.