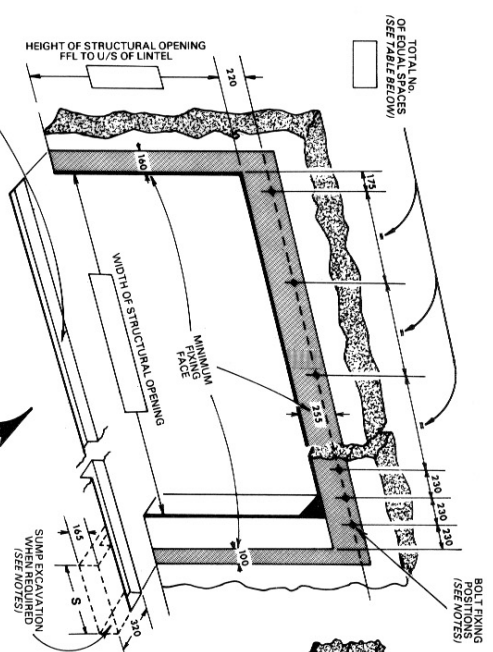


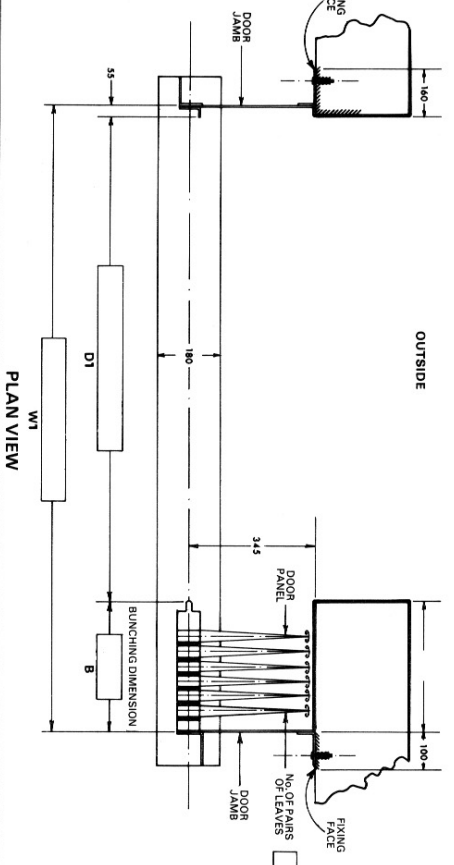
ALTERNATIVE CONSTRUCTIONS OF OPENINGS TO SUIT DOOR FIXING REQUIREMENTS



ELEVATION
VIEWED FROM INSIDE

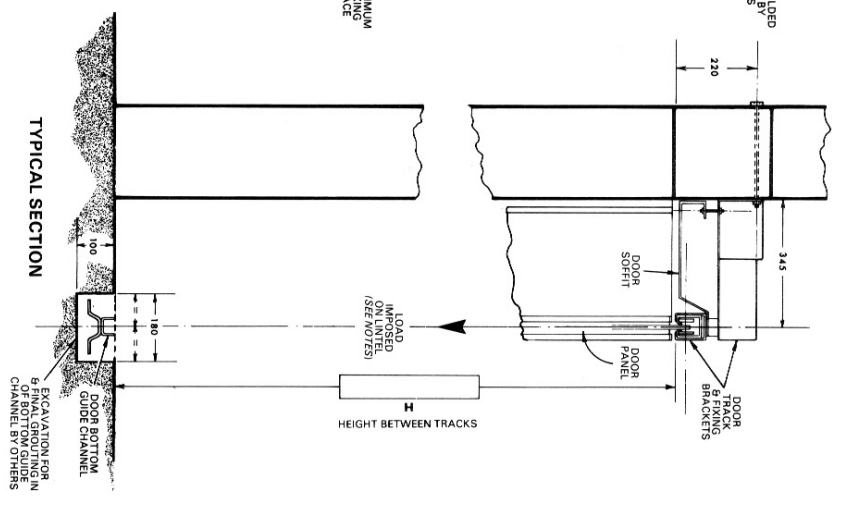
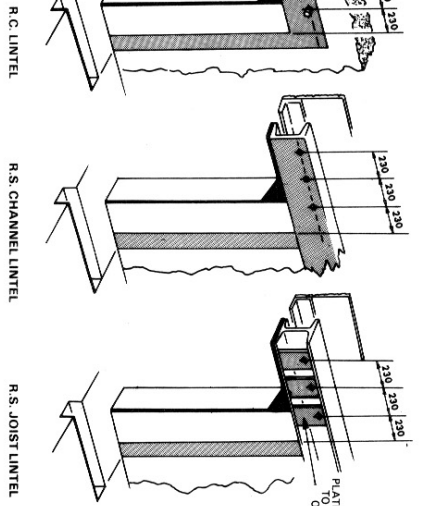
NOTE: ALL FIXING FACES MUST BE FLUSH IN THE SAME VERTICAL PLANE AND ARE INDICATED THUS

OUTSIDE



PLAN VIEW

SECTIONS THROUGH LINTELS



TYPICAL SECTION

IMPORTANT NOTES:

- DIMENSIONS**
All dimensions shown in millimetres.
- DOOR STRUCTURE**
Door panels, track, track fixing brackets, door soffit, door jambs and bottom guide channel by WID. All other materials and work indicated must be provided by others. ALL FIXING FACES MUST BE FLUSH AND IN THE SAME VERTICAL PLANE.
- BOLT FIXINGS**
The lintel must be suitably tied into structure to resist the over-turning moment and of adequate size to ensure the top track does not deflect more than 13mm under a moving load of 36.7 kPa/m² of door area in the direction and position of the arrow shown in the typical section. When the door is fixed to a concrete lintel 12mm dia. cast-in-agg or through bolts must be provided. When fixed to steel section lintels 14mm dia. holes must be drilled.
- DOOR JAMB FIXINGS**
Should the lintel construction be such that fixings are inaccessible, bolts must be welded in to give a minimum thread projection of 40mm from the fixing face.
- SUMP EXCAVATION**
Cast in, through and welded-in bolts to be supplied and fixed in position by others. All other fixings by WID.
- DOOR JAMB FIXINGS**
When other than steelwork is used, the area of the vertical fixing face for the full height must be constructed of suitable material for rawl bolt fixing of the door jambs.
- DOOR JAMB FIXINGS**
When sumps are ordered extra excavation is required at the bottom end of the bottom guide channel excavation 220mm wide x 185mm deep. The length of the excavation 'S' is determined by the number of pairs of leaves provided, up to and including:
9 to 13 pairs 'S' = 915mm

INSTALLATION DRAWING FOR WID SLIDING SHUTTER (TYPE HG) ARRANGEMENT 1 RIGHT HAND MANUALLY OPERATED

DRAWING ISSUE No.

ARCHITECT/CONTRACTOR

FOR EMERGENCY REPAIR OR MAINTENANCE CALL:
(01935) 473708 / 473851 Fax: (01935) 479413
www.widesserindustrialdoors.com enquiry@widesserindustrialdoors.com
Arlbury Road, Luton Trading Estate, Luton, Bedfordshire LU2 2BW

HG-SINGLE	TOTAL NUMBER OF EQUAL SPACES FOR BOLT FIXINGS RELATED TO DIMENSION																				
A	1	2	3	4	5	6	7	8	9	1330	1940	2530	3120	3710	4300	4890	5480	6075	6665	7255	7845
B	1	1	1	1	1	1	1	1	1	1	1	1	1	1	1	1	1	1	1	1	1
C	1	1	1	1	1	1	1	1	1	1	1	1	1	1	1	1	1	1	1	1	1
D	1	1	1	1	1	1	1	1	1	1	1	1	1	1	1	1	1	1	1	1	1
E	1	1	1	1	1	1	1	1	1	1	1	1	1	1	1	1	1	1	1	1	1
F	1	1	1	1	1	1	1	1	1	1	1	1	1	1	1	1	1	1	1	1	1
G	1	1	1	1	1	1	1	1	1	1	1	1	1	1	1	1	1	1	1	1	1
H	1	1	1	1	1	1	1	1	1	1	1	1	1	1	1	1	1	1	1	1	1

LOCATION _____

DRAWN BY _____ DATE _____

SCALE _____

ORDER No. _____ DRAWING No. **HG1 RHM**