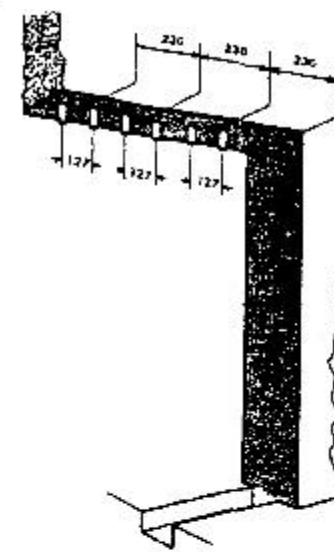
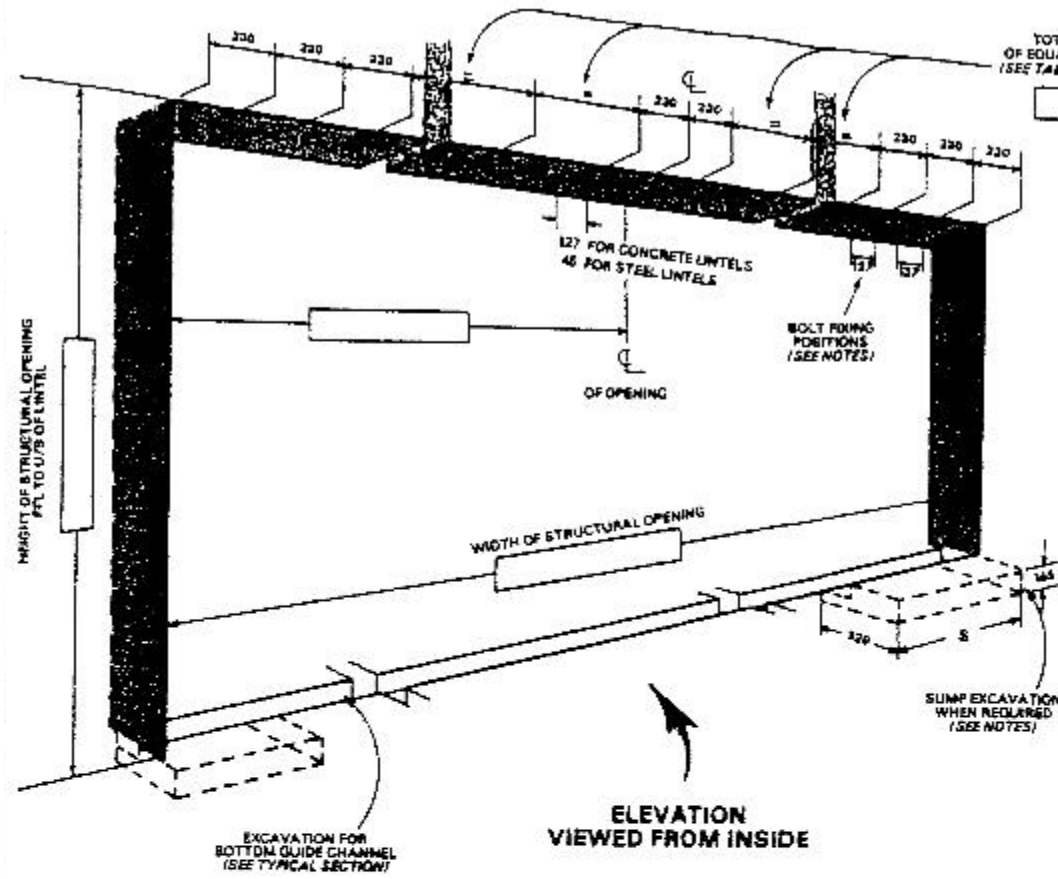
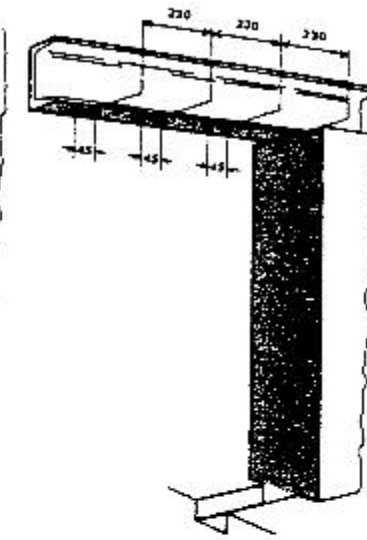


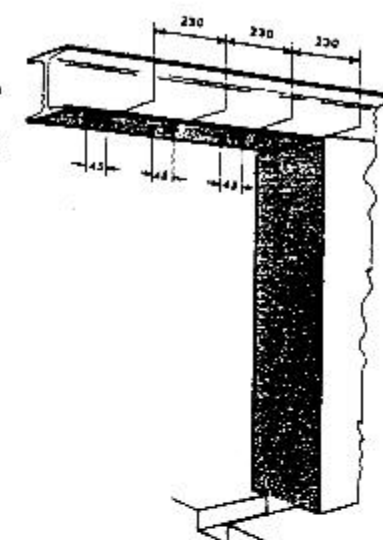
ALTERNATIVE CONSTRUCTIONS OF OPENINGS TO SUIT DOOR FIXING REQUIREMENTS



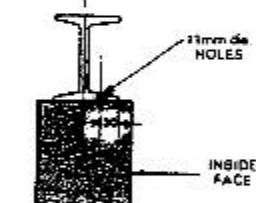
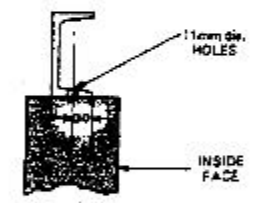
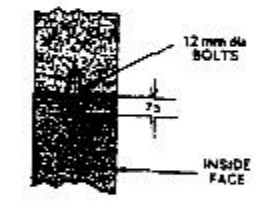
R.C. LINTEL



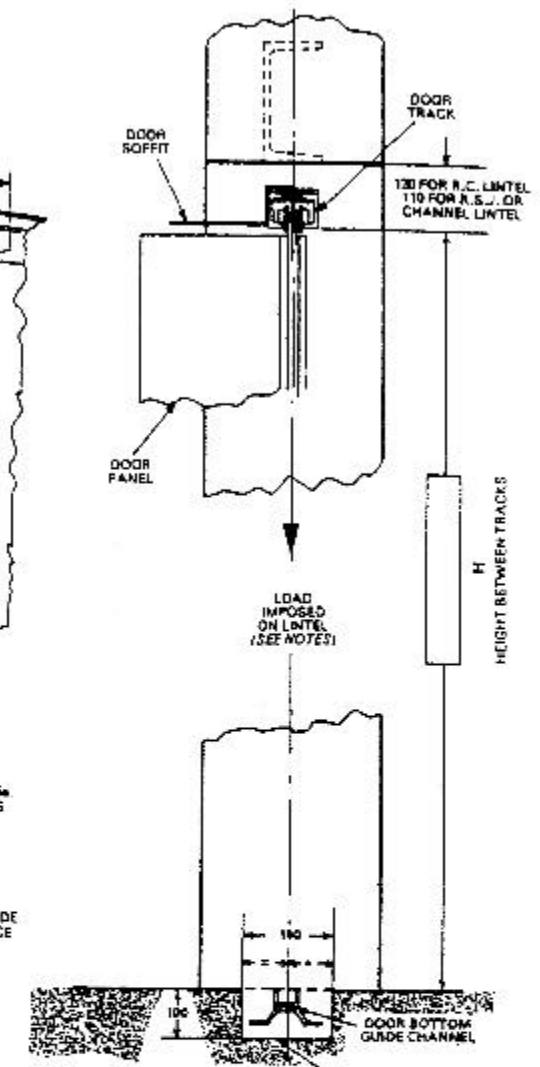
R.S. CHANNEL LINTEL



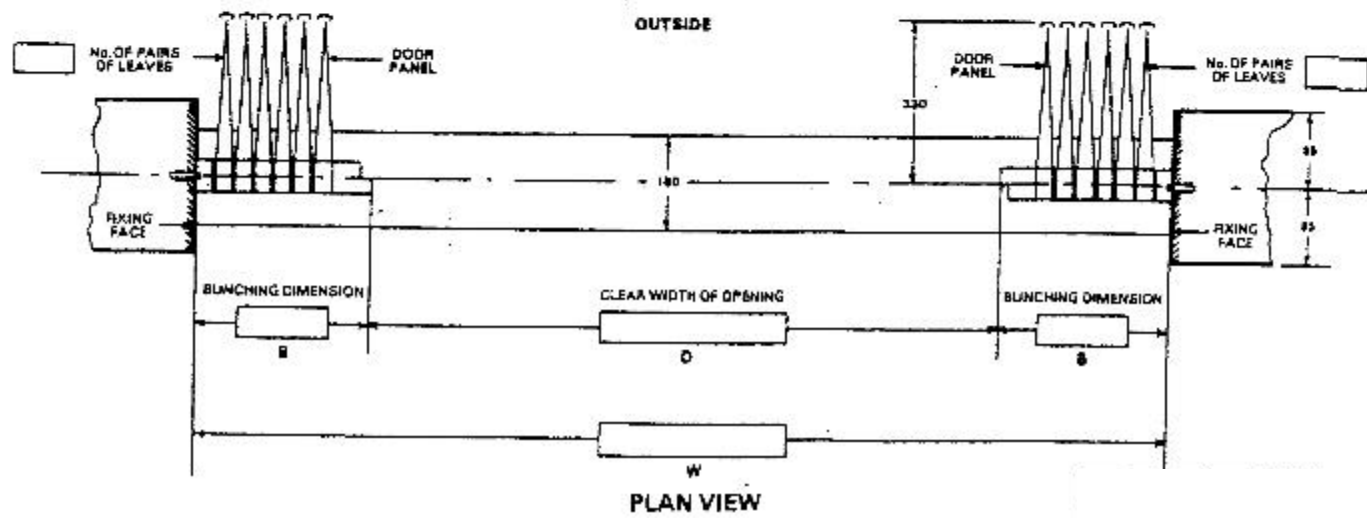
R.S. JOIST LINTEL



SECTIONS THROUGH LINTELS



TYPICAL SECTION



PLAN VIEW

IMPORTANT NOTES:

- DIMENSIONS** All dimensions shown in millimetres.
- DOOR** Door panels, track, soffit, and bottom guide channel by WEL.
- STRUCTURE** All other materials and work indicated must be provided by others. ALL FIXING FACES MUST BE FLUSH.
- BOLT FIXINGS** The lintel must be suitably tied into structure to resist the over-turning moment and of adequate size to ensure the top track does not deflect more than 13 mm under a moving load of 36.7 kpa/m² of door area in the direction and position of the arrow shown in the typical section.
When the door is hung from a concrete lintel 12 mm dia. cast-in rag bolts must be provided with a bolt projection of 75 mm below soffit face of lintel, see section for R.C. lintel.
When steel section lintels are used 11 mm dia. holes must be drilled.
Cast in, rough and welded-in bolts to be supplied and fixed in position by others. All other fixings by WEL.
- DOOR PANEL FIXINGS** When other than steelwork is used, the area of the vertical fixing faces for the full height must be constructed of suitable material for rawl bolt fixing of the door jambs.
- SUMP EXCAVATION** When sumps are ordered, extra excavation is required at both ends of the bottom guide channel excavation 320 mm wide x 186 mm deep. The length of the excavation 'S' is determined by the number of pairs of leaves provided, up to and including:-
8 pairs 'S' = 610 mm
7 to 10 pairs 'S' = 815 mm
11 to 13 pairs 'S' = 1015 mm

Wessex Industrial Doors Ltd.

Installation drawing for Wessex sliding shutter
TYPE HH
Arrangement 2 Bi parting manually operated

TEL : +44 1935 473708
FAX : +44 1935 479413

Artillery Road
Lufton Trading Estate
Yeovil
SOMERSET
BA22 8RP
www.wessexindustrialdoors.com
E-mail :- enquiries@wessexindustrialdoors.com