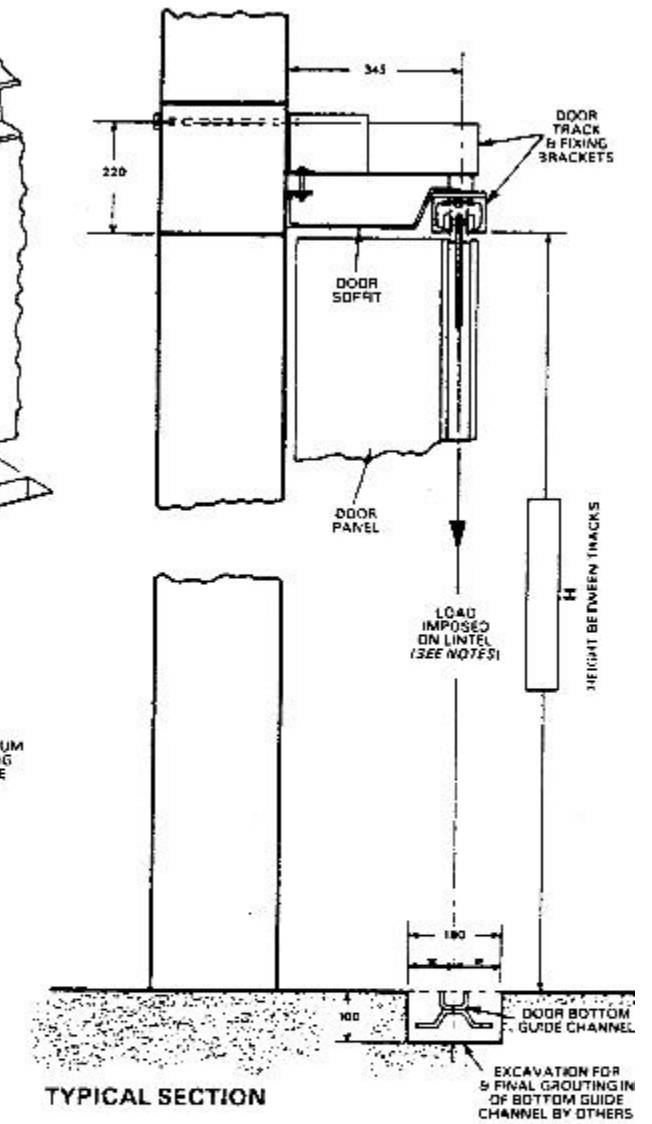
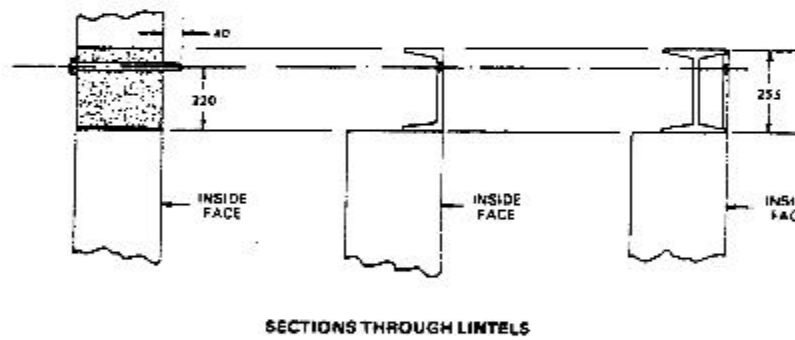
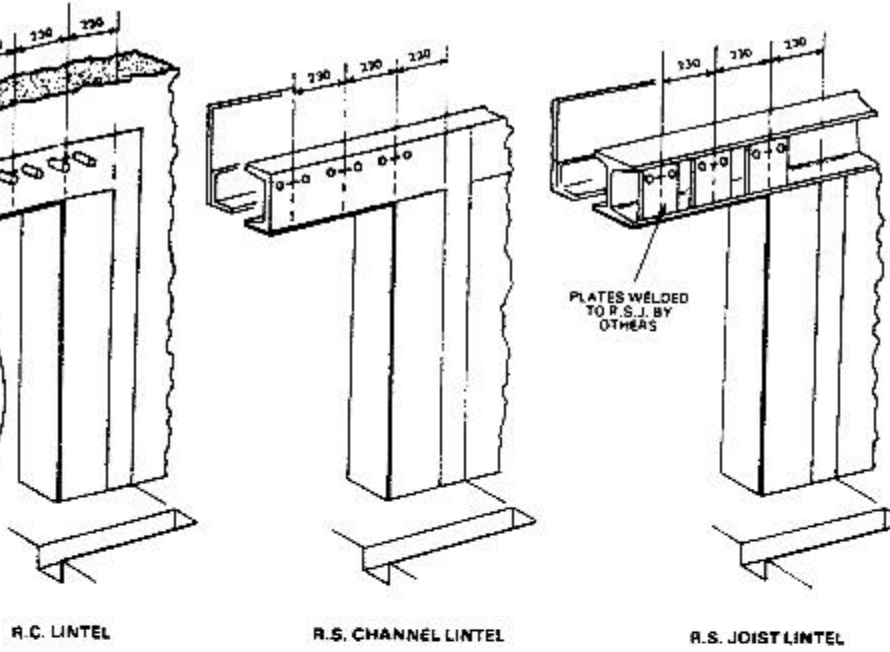
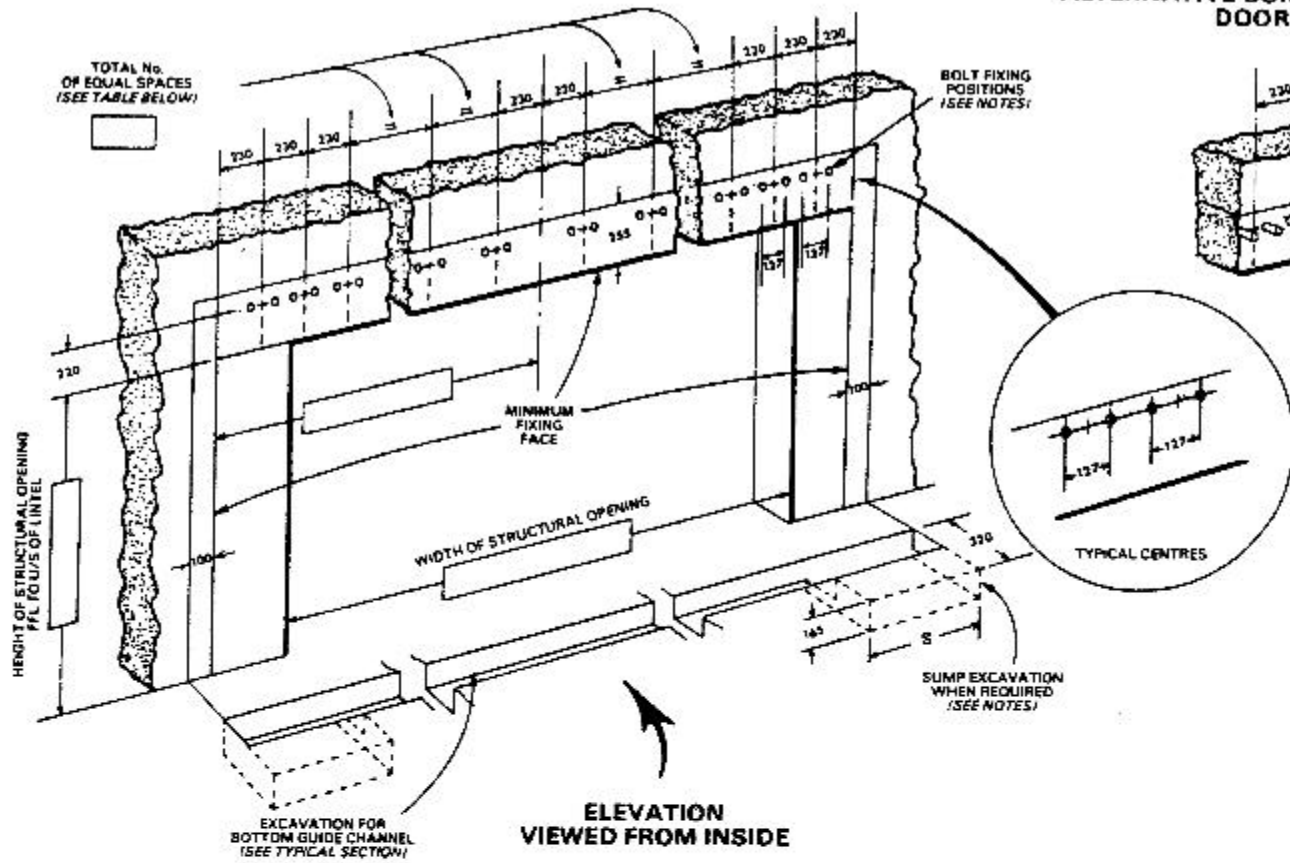


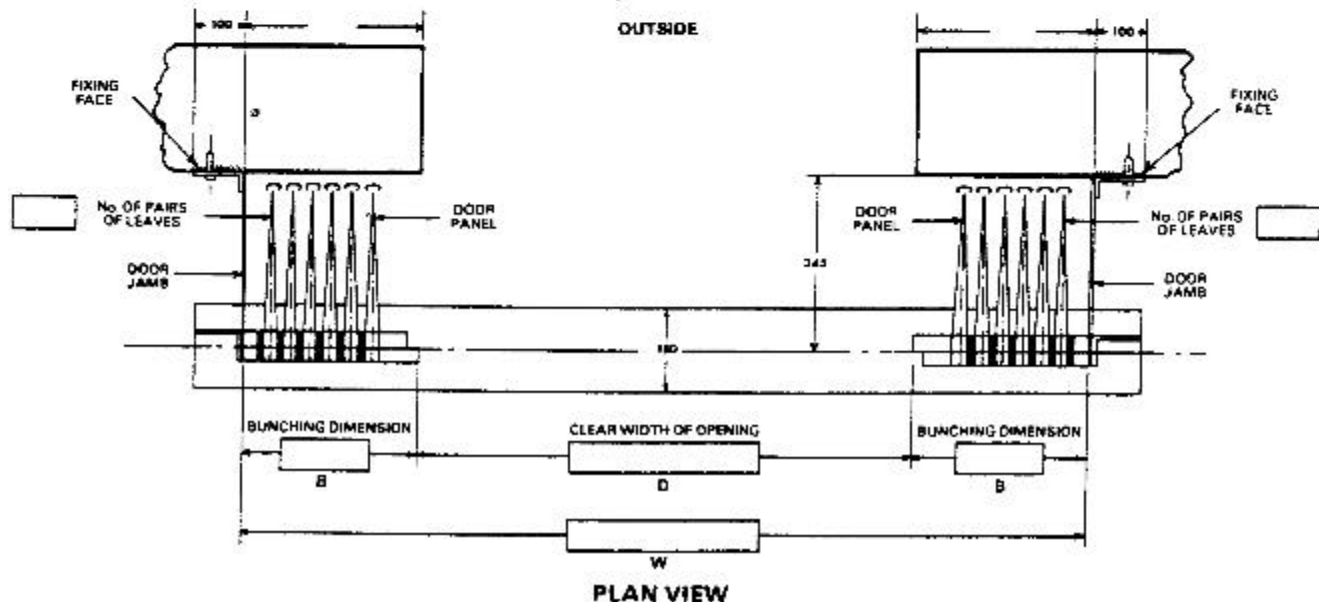
ALTERNATIVE CONSTRUCTIONS OF OPENINGS TO SUIT  
DOOR FIXING REQUIREMENTS



NOTE: ALL FIXING FACES MUST BE FLUSH IN THE SAME VERTICAL PLANE AND ARE INDICATED THUS

IMPORTANT NOTES:

- DIMENSIONS** All dimensions shown in millimetres.
- DOOR** Door panels, track, track fixing brackets, door soffit, door jambs and bottom guide channel by WEL.
- STRUCTURE** All other materials and work indicated must be provided by others. ALL FIXING FACES MUST BE FLUSH AND IN THE SAME VERTICAL PLANE. The lintel must be suitably tied into structure to resist the over-turning moment and of adequate size to ensure the top track does not deflect more than 13mm under a moving load of 38.7 kgs/m<sup>2</sup> of door area in the direction and position of the arrow shown in the typical section.
- BOLT FIXINGS** When the door is fixed to a concrete lintel 12mm dia. cast-in rag or through bolts must be provided. When fixed to steel section lintels 14mm dia. holes must be drilled. Should the lintel construction be such that fixings are inaccessible, bolts must be welded in to give a minimum thread projection of 40mm from the fixing face. Cast in, through and welded-in bolts to be supplied and fixed in position by others. All other fixings by WEL.
- DOOR JAMB FIXINGS** When other than steelwork is used, the area of the vertical fixing faces for the full height must be constructed of suitable material for rawl bolt fixing of the door jambs.
- SUMP EXCAVATION** When sumps are ordered, extra excavation is required at both ends of the bottom guide channel excavation 320mm wide x 165mm deep. The length of the excavation 'S' is determined by the number of pairs of leaves provided, up to and including:
  - 6 pairs 'S' = 710mm
  - 7 to 10 pairs 'S' = 915mm
  - 11 to 13 pairs 'S' = 1120mm



# Wessex Industrial Doors Ltd.

Installation drawing for Wessex sliding shutter door  
Type HH for openings  
Arrangement 1 : Bi-parting, manually operated

TEL : +44 1935 473708  
FAX : +44 1935 479413

Artillery Road  
Lufton Trading Estate  
Yeovil  
SOMERSET  
BA22 8RP  
www.wessexindustrialdoors.com  
E-mail :- enquiries@wessexindustrialdoors.com