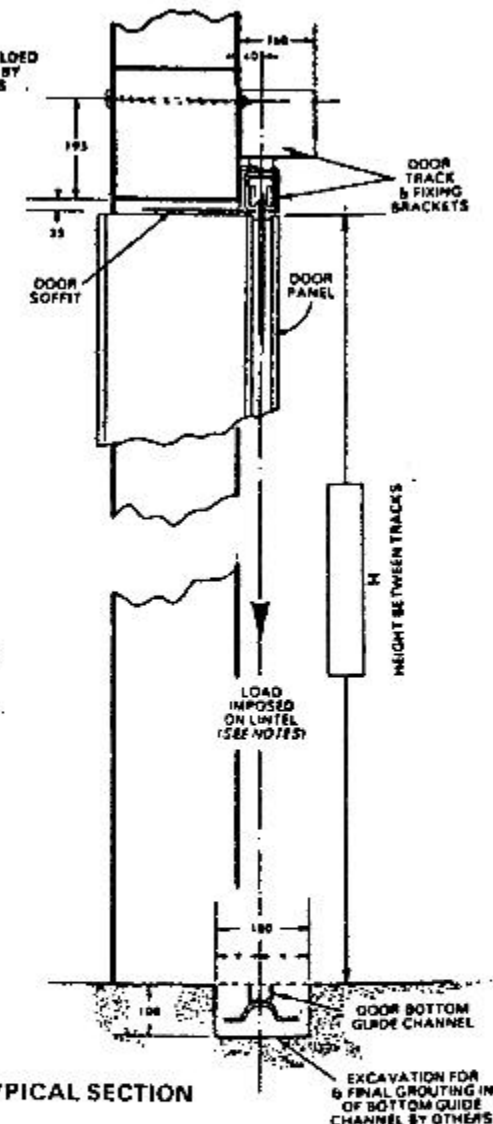
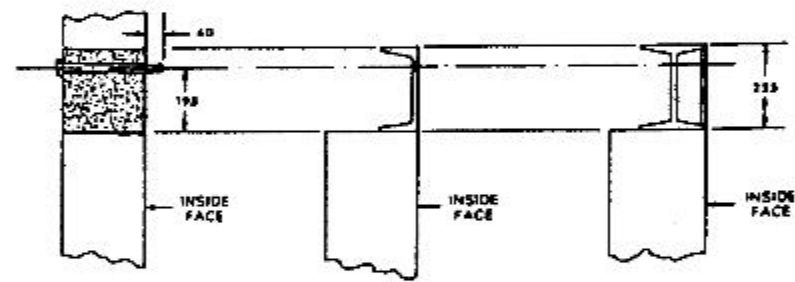
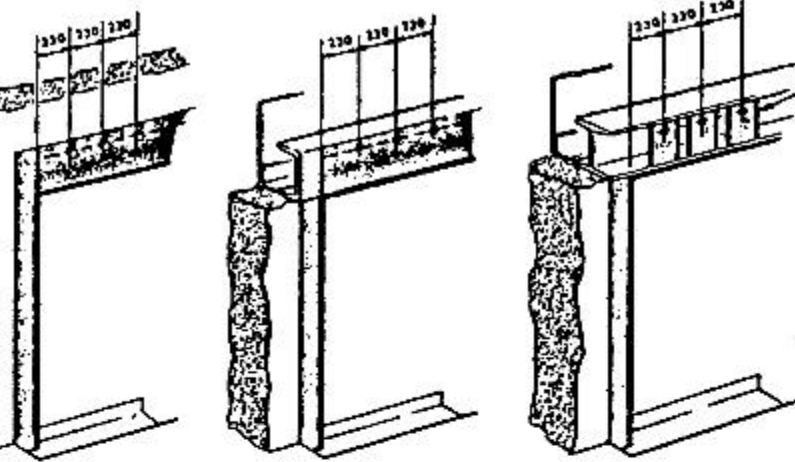
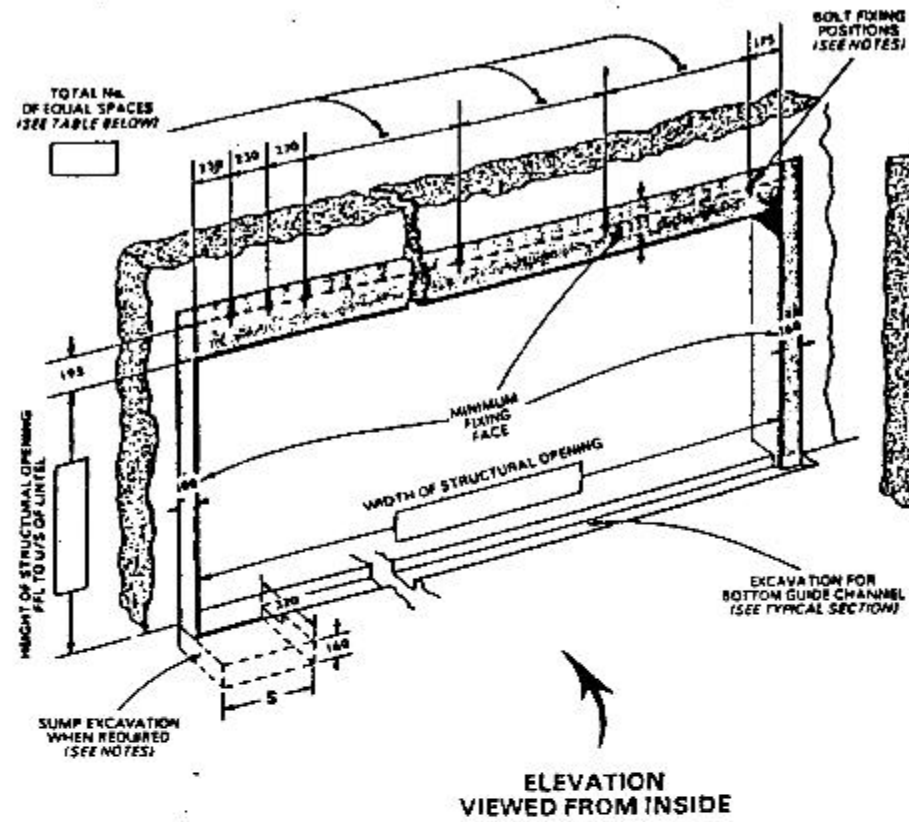
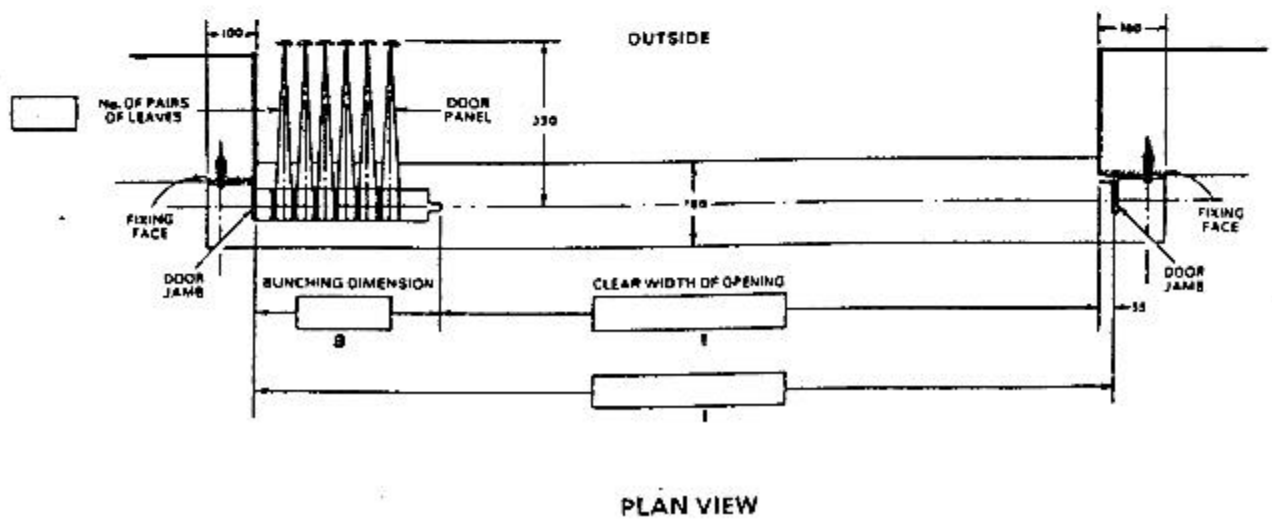


ALTERNATIVE CONSTRUCTIONS OF OPENINGS TO SUIT DOOR FIXING REQUIREMENTS



NOTE: ALL FIXING FACES MUST BE FLUSH IN THE SAME VERTICAL PLANE AND ARE INDICATED THUS



IMPORTANT NOTES:

- DIMENSIONS** All dimensions shown in millimetres.
- DOOR** Door panels, track, track fixing brackets, door soffit, door jambs and bottom guide channel - by WEL.
- STRUCTURE** All other materials and work indicated must be provided by others. ALL FIXING FACES MUST BE FLUSH AND IN THE SAME VERTICAL PLANE. The lintel must be suitably tied into structure to resist the over-turning moment and of adequate size to ensure the top track does not deflect more than 13 mm under a moving load of 36.7 kpa/m<sup>2</sup> of door area in the direction and position of the arrow shown in the typical section.
- BOLT FIXINGS** When the door is fixed to a concrete lintel, 12 mm dia. cast-in rsg. or through bolts must be provided. When fixed to steel section lintels, 14 mm dia. holes must be drilled. Should the lintel construction be such that fixings are inaccessible, bolts must be welded in to give a minimum thread projection of 40 mm from the fixing face. Cast in, through and welded-in bolts must be supplied and fixed in position by others. All other fixings by WEL.
- DOOR JAMB FIXINGS** When other than steelwork is used, the area of the vertical fixing faces for the full height must be constructed of suitable materials for rawl bolt fixing of the door jambs.
- SUMP EXCAVATION** When sumps are ordered extra excavation is required at the bunching end and of the bottom guide channel excavation 320 mm wide x 165 mm deep. The length of the excavation 'S' is determined by the number of pairs of leaves provided, up to and including:-  
 8 pairs 'S' 710 mm  
 9 to 13 pairs 'S' 915 mm

Wessex Industrial Doors Ltd.

Installation drawing for Wessex sliding shutter  
 TYPE HG  
 Arrangement 3 left hand manually operated

TEL : +44 1935 473708  
 FAX : +44 1935 479413

Artillery Road  
 Lufton Trading Estate  
 Yeovil  
 SOMERSET  
 BA22 8RP  
 www.wessexindustrialdoors.com  
 E-mail :- enquiries@wessexindustrialdoors.com