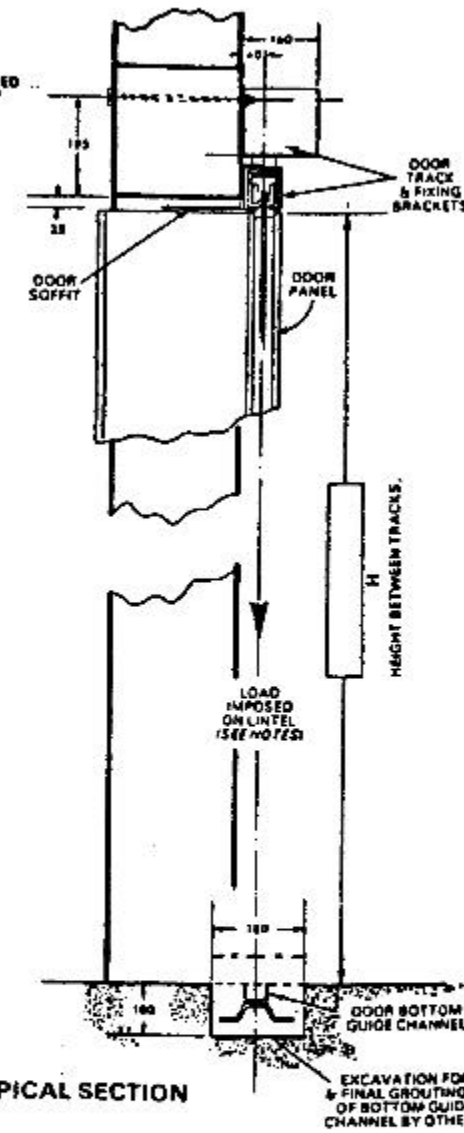
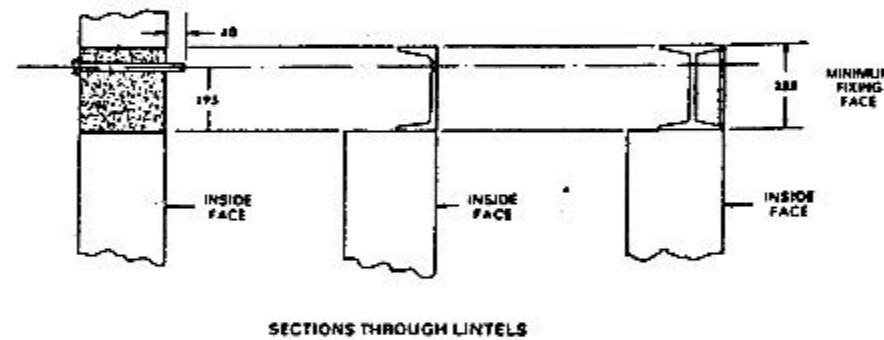
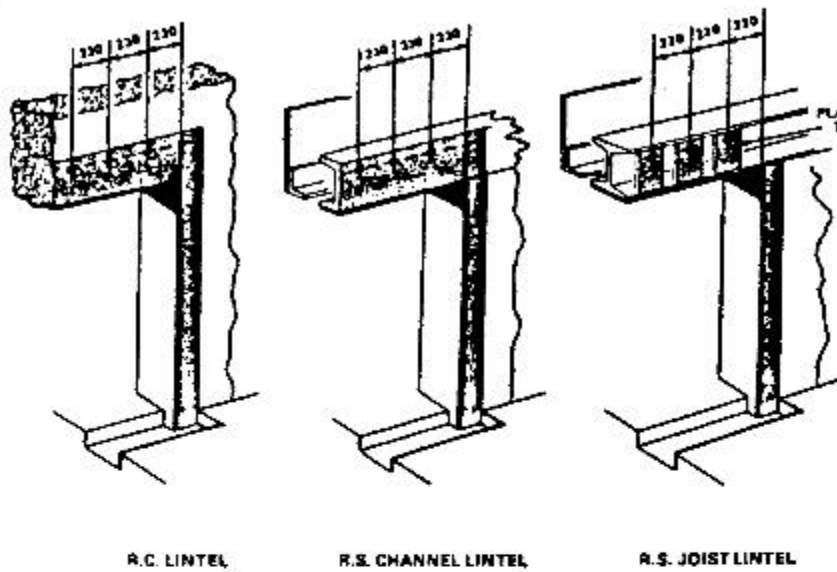
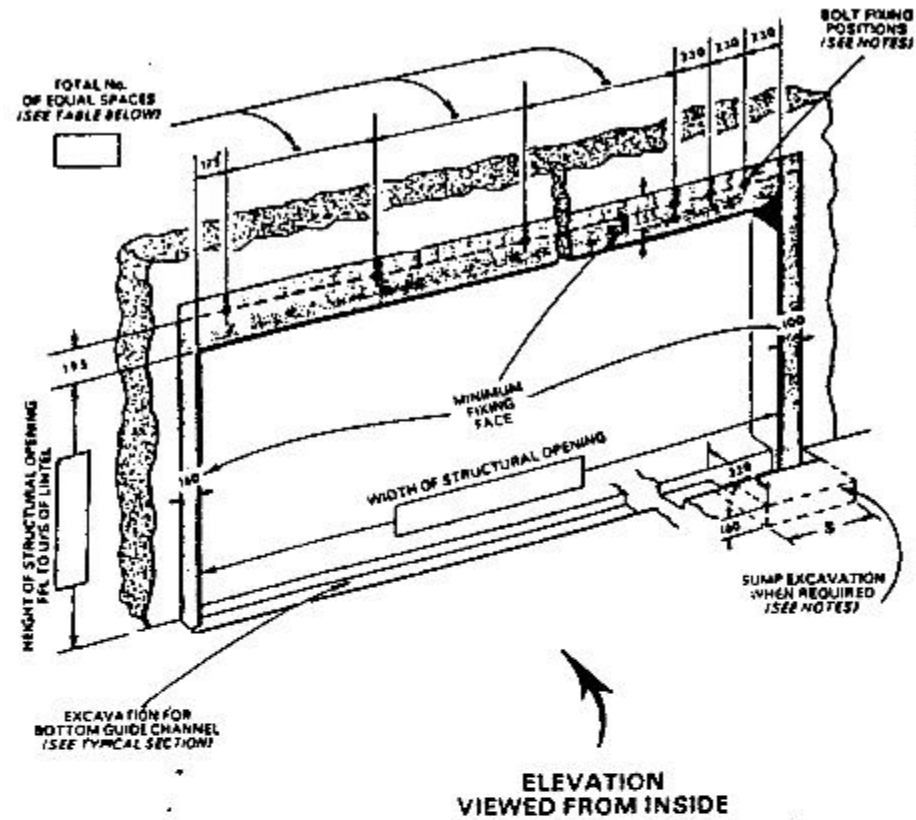
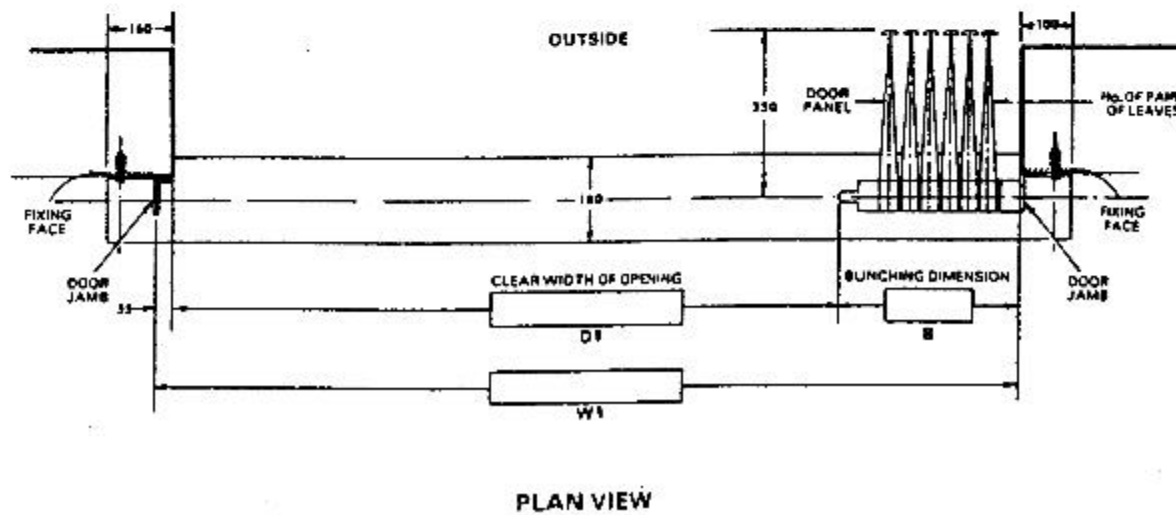


ALTERNATIVE CONSTRUCTIONS OF OPENINGS TO SUIT DOOR FIXING REQUIREMENTS



NOTE: ALL FIXING FACES MUST BE FLUSH IN THE SAME VERTICAL PLANE AND ARE INDICATED THUS



IMPORTANT NOTES:

- DIMENSIONS** All dimensions shown in millimetres.
- DOOR** Door panels, track, track fixing brackets, soffit, door jambs and bottom guide channel by WEL.
- STRUCTURE** All other materials and work indicated must be provided by others. ALL FIXING FACES MUST BE FLUSH AND IN THE SAME VERTICAL PLANE. The lintel must be suitably tied into structure to resist the over-turning moment and of adequate size to ensure the top track does not deflect more than 13 mm under a moving load of 36.7 kpa/m² of door area in the direction and position of the arrow shown in the typical section.
- BOLT FIXINGS** When the door is fixed to a concrete lintel, 12 mm dia. cast-in rag or through bolts must be provided. When fixed to steel section lintels, 14 mm dia. holes must be drilled. Should the lintel construction be such that fixings are inaccessible, bolts must be welded in to give a minimum threaded projection of 40 mm from the fixing face. Cast in, through and welded-in bolts must be supplied and fixed in position by others. All other fixings by WEL.
- DOOR JAMB FIXINGS** When other than steelwork is used, the area of the vertical fixing faces for the full height must be constructed of suitable materials for rawl bolt fixing of the door jambs.
- SUMP EXCAVATION** When sumps are ordered extra excavation is required at the bunching and of the bottom guide channel excavation 320 mm wide x 166 mm deep. The length of the excavation 'S' is determined by the number of pairs of leaves provided, up to and including:-
 8 pairs 'S' = 710 mm
 9 to 13 pairs 'S' = 916 mm

Wessex Industrial Doors Ltd.

Installation drawing for Wessex sliding shutter
 TYPE HG
 Arrangement 3 Right hand manually operated

TEL : +44 1935 473708
 FAX : +44 1935 479413

Artillery Road
 Lufton Trading Estate
 Yeovil
 SOMERSET
 BA22 8RP
 www.wessexindustrialdoors.com
 E-mail :- enquiries@wessexindustrialdoors.com