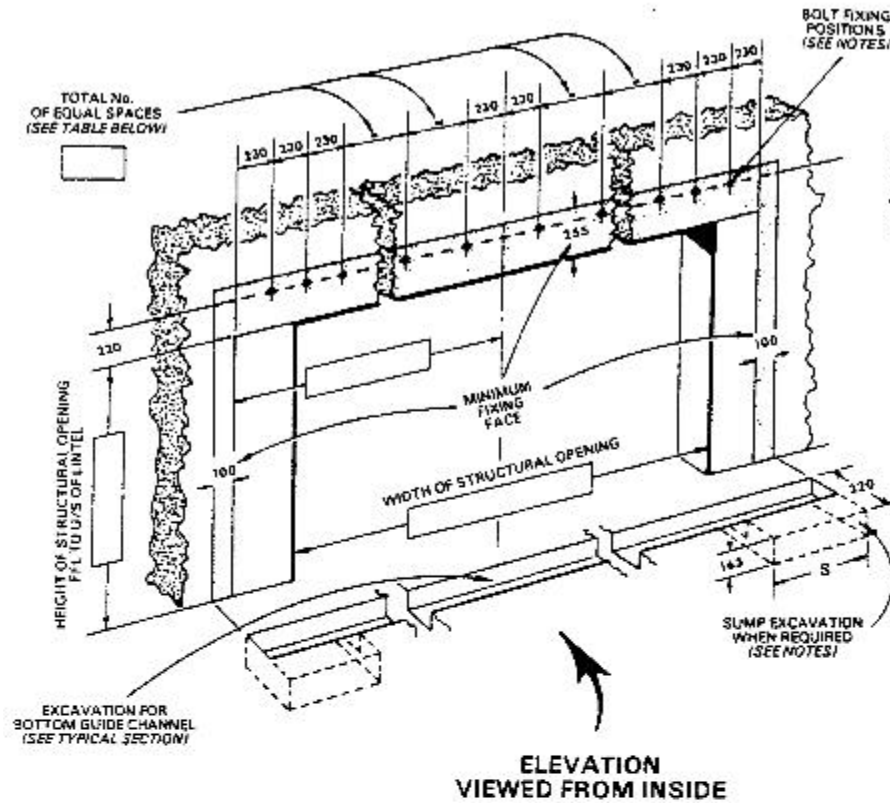
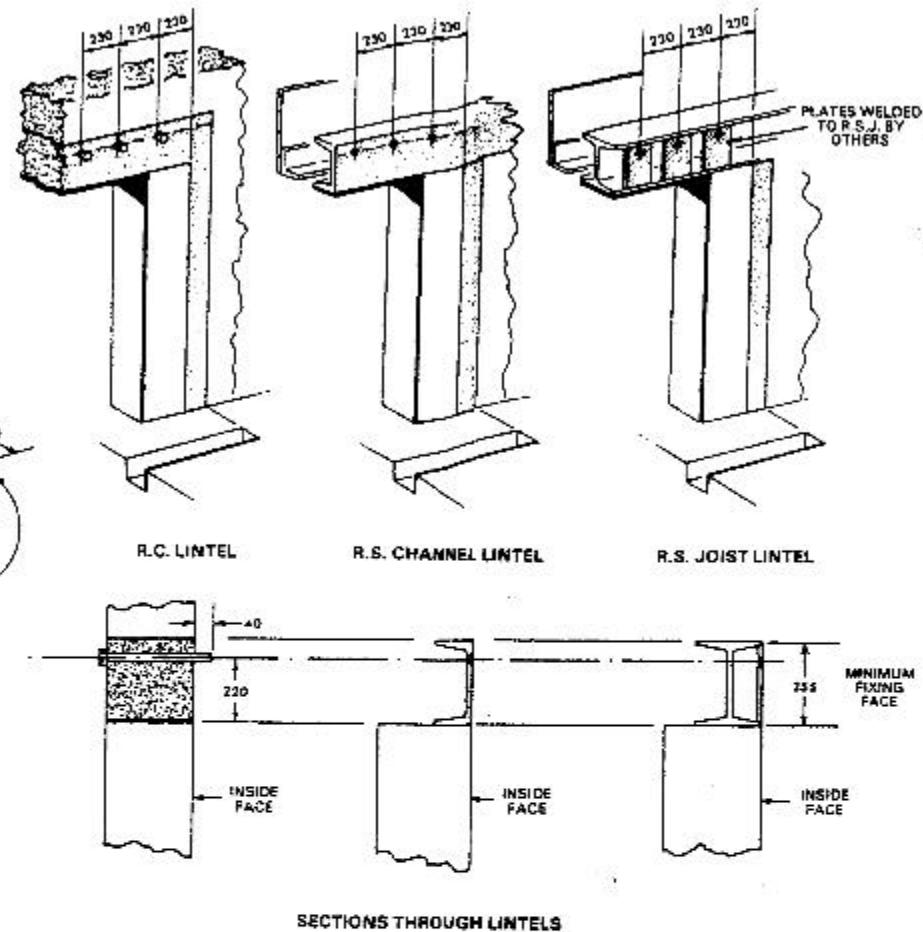


ALTERNATIVE CONSTRUCTIONS OF OPENINGS TO SUIT
DOOR FIXING REQUIREMENTS

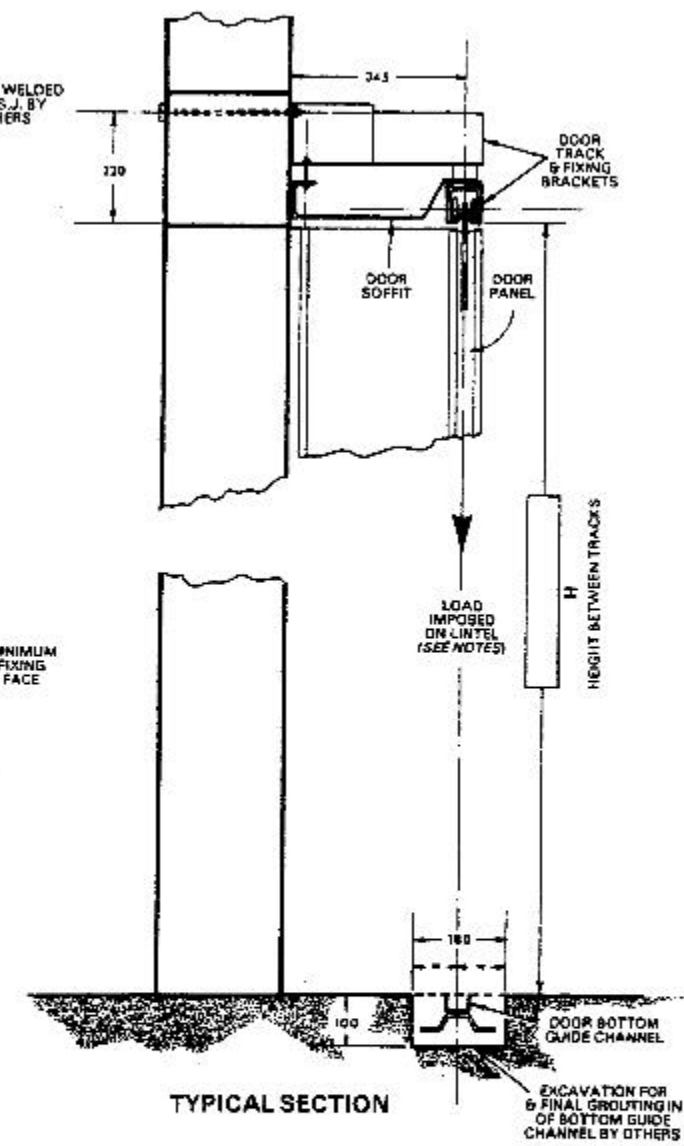


ELEVATION
VIEWED FROM INSIDE

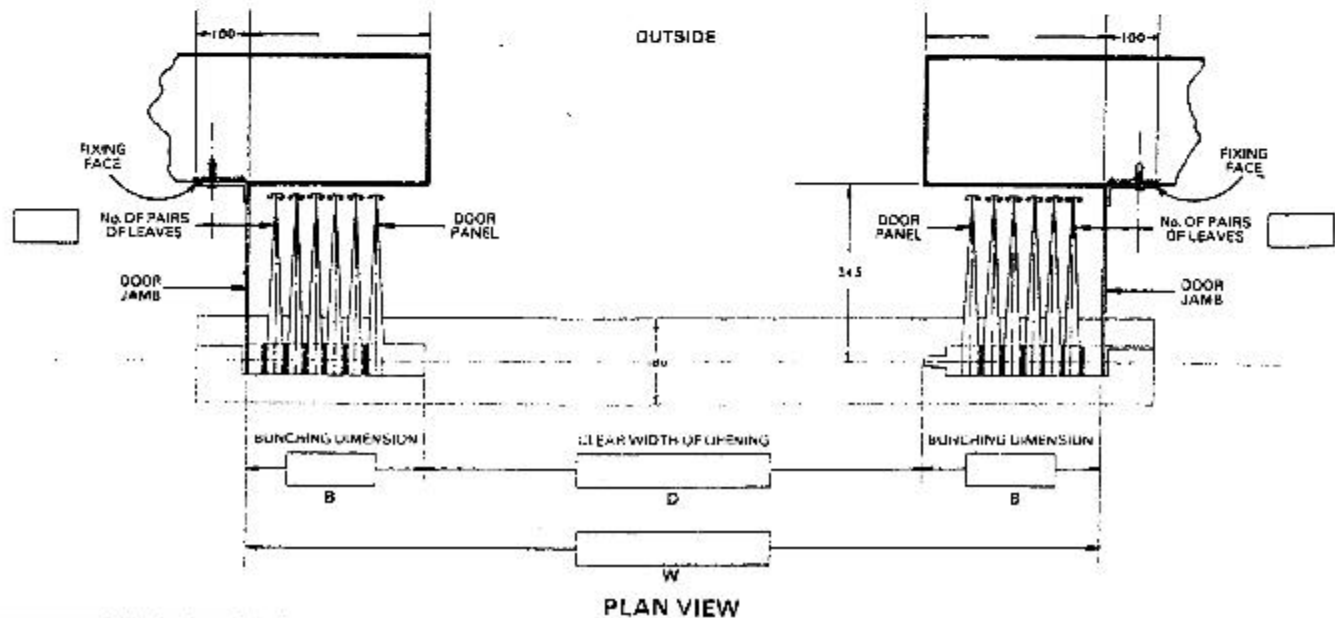
NOTE: ALL FIXING FACES MUST BE FLUSH
IN THE SAME VERTICAL PLANE AND
ARE INDICATED THUS



SECTIONS THROUGH LINTELS



TYPICAL SECTION



PLAN VIEW

- IMPORTANT NOTES:**
- DIMENSIONS** All dimensions shown in millimetres.
 - DOOR STRUCTURE** Door panels, track, track fixing brackets, door soffit, door jambs and bottom guide channel by WID. All other materials and work indicated must be provided by others. ALL FIXING FACES MUST BE FLUSH AND IN THE SAME VERTICAL PLANE. The lintel must be suitably tied into structure to resist the over-turning moment and of adequate size to ensure the top track does not deflect more than 13 mm under a moving load of 38.7 kgs/m² of door area in the direction and position of the arrow shown in the typical section.
 - BOLT FIXINGS** When the door is fixed to a concrete lintel 12 mm dia. cast-in rag or through bolts must be provided. When fixed to steel section lintels 14 mm dia. holes must be drilled. Should the lintel construction be such that fixings are inaccessible, bolts must be welded in to give a minimum thread projection of 40 mm from the fixing face.
 - DOOR JAMB FIXINGS** Cast in, through and welded-in bolts to be supplied and fixed in position by others. All other fixings by WID.
 - SUMP EXCAVATION** When sumps are ordered, extra excavation is required at both ends of the bottom guide channel excavation 320 mm wide x 165 mm deep. The length of the excavation 'S' is determined by the number of pairs of leaves provided, up to and including: 8 pairs 'S' = 710 mm; 9 to 13 pairs 'S' = 915 mm.

Wessex Industrial Doors Ltd.

Installation drawing for Wessex sliding shutter
TYPE HG
Arrangement 1 bi-parting manually operated

TEL : +44 1935 473708
FAX : +44 1935 479413

Artillery Road
Lufton Trading Estate
Yeovil
SOMERSET
BA22 8RP
www.wessexindustrialdoors.com
E-mail :- enquiries@wessexindustrialdoors.com